



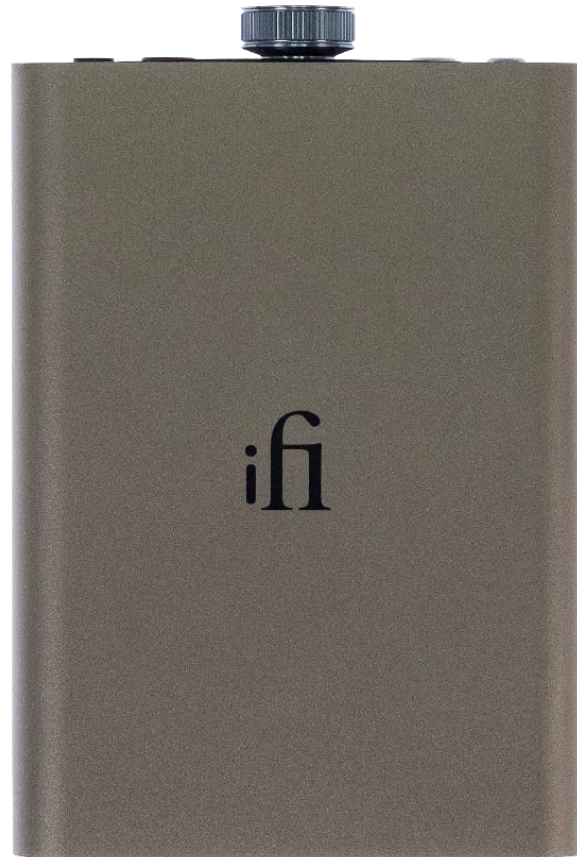
hip dac 3

The Legacy Continues.

Titanium Shadow. Trendsetting Innovations.

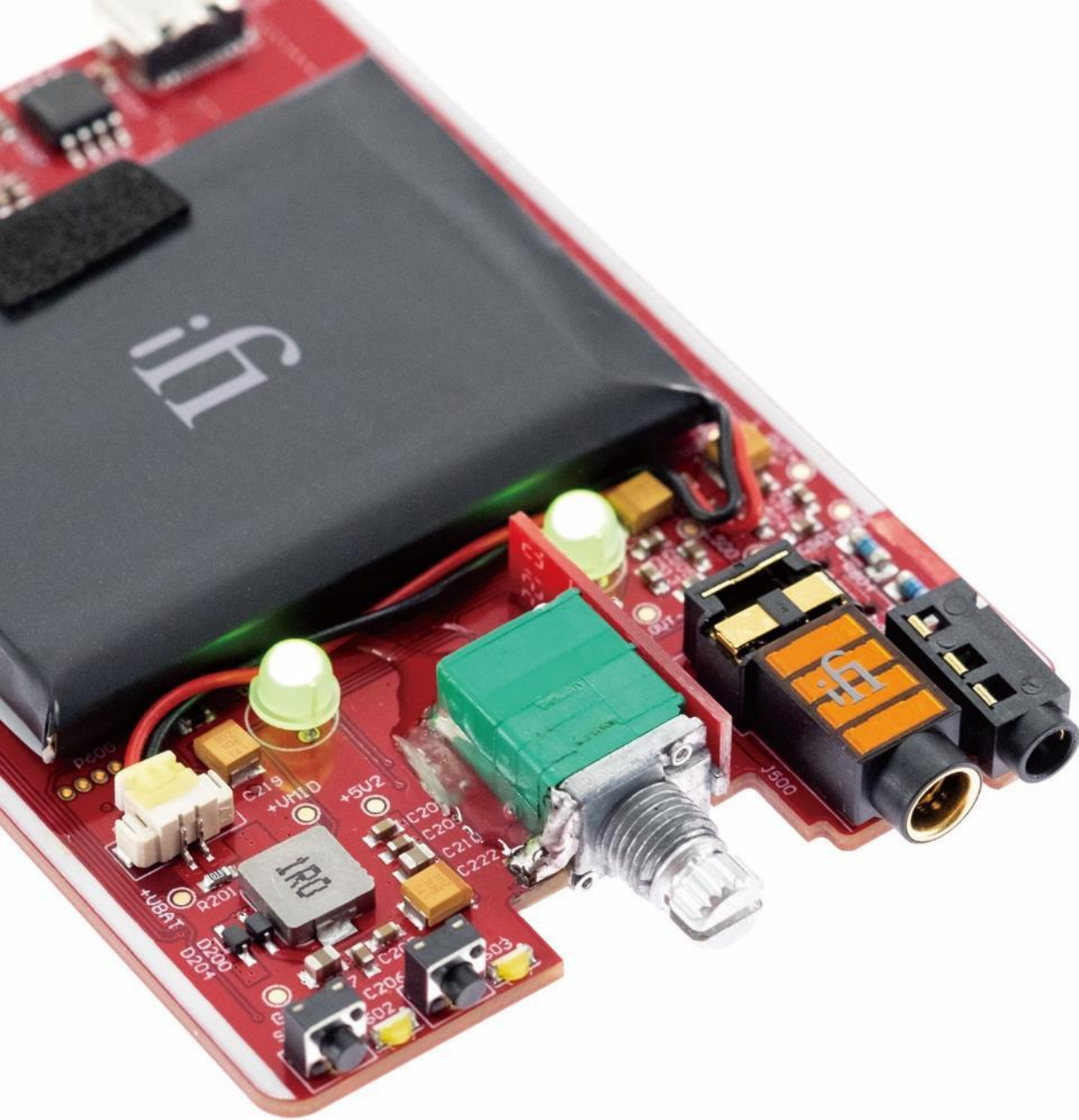
The hip-dac series is one of our most popular portable DAC/Amps.

It replaces the subpar DAC and Amp in smartphones, PCs, and Macs to enhance headphone sound.



hip dac 3





Unique Selling Points



Hip Flask Size. Magnum Performance.

Compact as a hip flask, measuring 102 x 70 x 14 mm and weighing 135g.

Delivering **10 times** more power than your notebook or smartphone.

Supports PCM up to **384kHz**, DSD up to **DSD256**, and full **MQA** decoding.

PCM
Pulse Code Modulation

DSD
Direct Stream Digital



Key features

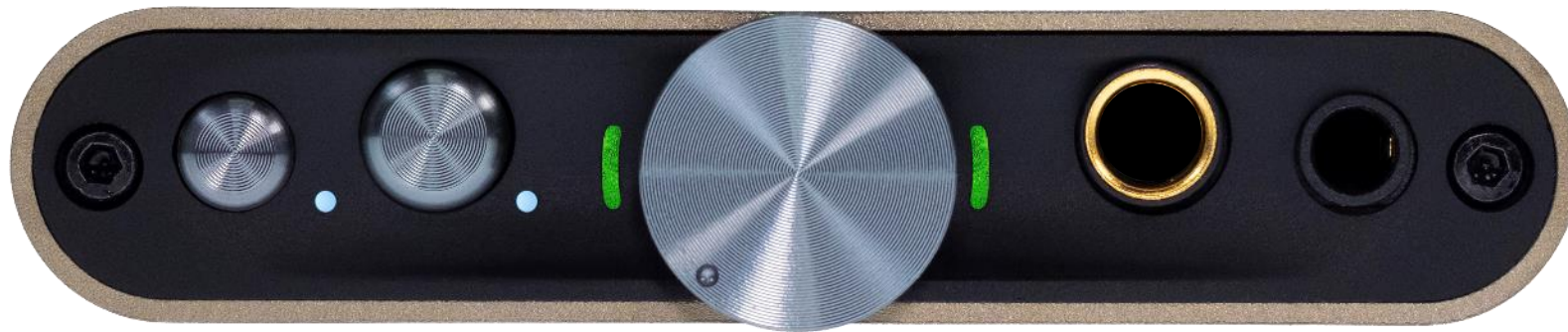
Delivers up to **400mW** for 32Ω headphones, ensuring wide compatibility.

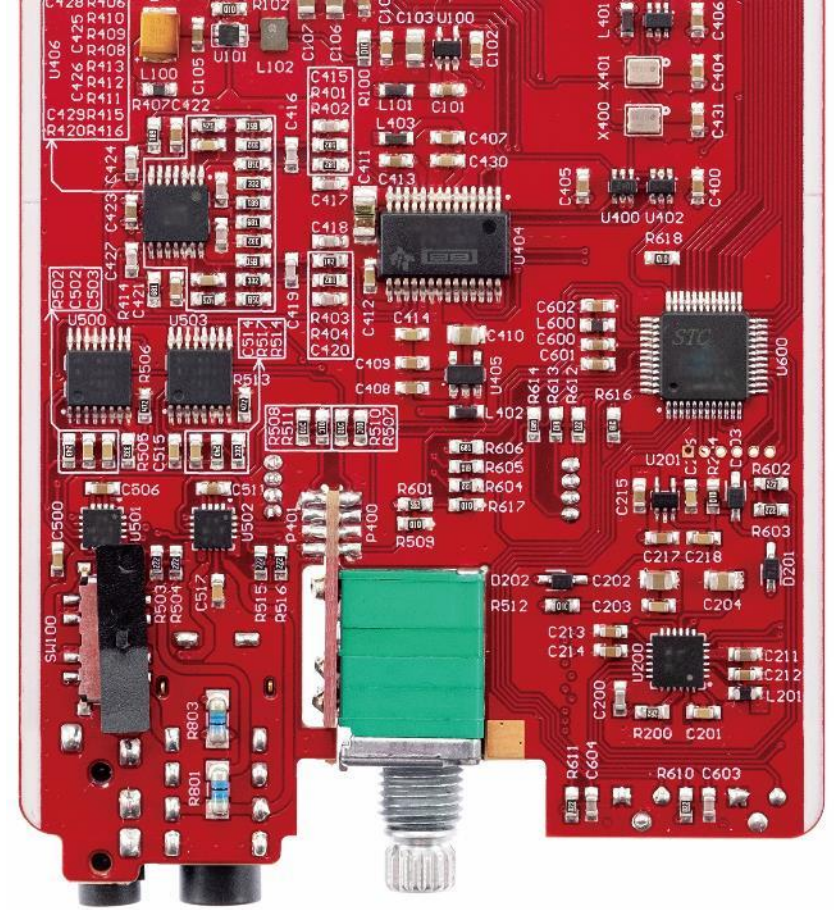
Supports high-impedance headphones up to 600Ω.

PowerMatch optimises power for your headphones.

iEMatch enhances output for high-sensitivity headphones, ideal for IEMs.

XBass boosts bass while preserving midrange clarity.





Upgraded Features and Functionality

New Colour and Added iEMatch

hip dac 3



New Titanium Shadow colour.

hip dac2



New underside switch activates **iEMatch** for IEMs, reducing hiss and enhancing detail.

Two USB-C ports

hip dac 3



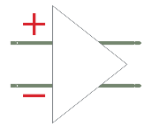
Two USB-C ports simplify cable management: one for audio and the other for charging.

hip dac2



True Balanced Circuit Design and Circuitry Upgrades

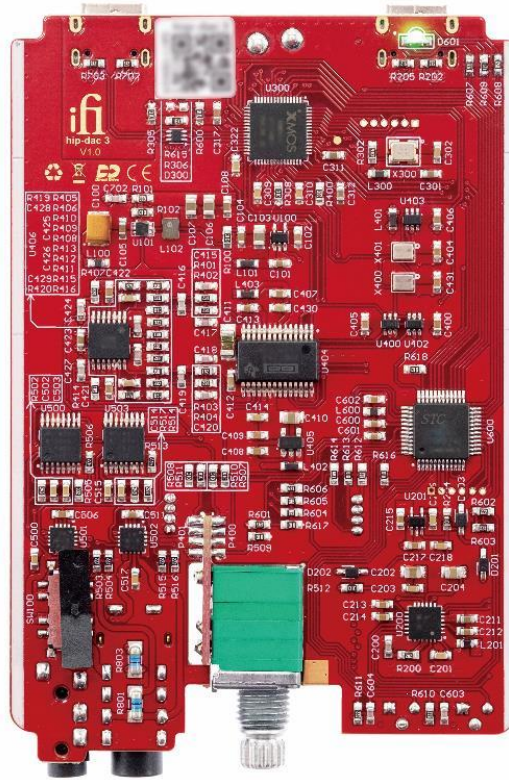
Balanced



The hip-dac 3 features a **True Balanced** circuit design, a rarity in its price range, that minimises signal distortion and delivers a purer sound for your headphones.

Features **circuit upgrades** with **new capacitors** for enhanced frequency response.

hip dac 3



Updated **GMT circuitry** with a new oscillator reduces phase noise for purer sound.



hip dac 2





hip-dac Series Comparison



| | hip-dac 3 | hip-dac 2 Gold Edition | hip-dac2 |
|--------------------------------|--|---------------------------------|---------------------------------|
| Colour | Titanium Shadow | Gold | Sunset Orange |
| Input | USB-C | USB type A | USB type A |
| Formats supported | DSD256, PCM 384kHz, MQA Decoder | DSD256, PCM 384kHz, MQA Decoder | DSD256, PCM 384kHz, MQA Decoder |
| iEMatch | Yes | N/A | N/A |
| Headphone Outputs | | | |
| Balanced | 4.4mm | 4.4mm | 4.4mm |
| S-BAL | 3.5mm | 3.5mm | 3.5mm |
| Power Output (RMS) | | | |
| Balanced | 400mW @ 32Ω; 6.3V @ 600Ω | 400mW @ 32Ω; 6.3V @ 600Ω | 400mW @ 32Ω; 6.3V @ 600Ω |
| S-BAL | 280mW @ 32Ω; 3.2V @ 600Ω | 280mW @ 32Ω; 3.2V @ 600Ω | 280mW @ 32Ω; 3.2V @ 600Ω |
| Additional Improvements | <ul style="list-style-type: none">- Circuit refinements- New metal film capacitors for improved frequency response- Updated GMT circuitry with a new crystal oscillator to reduce phase noise. | | |

Other Features



Explanation of PowerMatch and iEMatch

PowerMatch optimizes the hip-dac 3 to match headphones' impedance and sensitivity, ensuring peak performance.

Tip: Turn off for IEMs (in-ear monitors / earbuds);

Turn on for headphones to boost gain by 10dB.



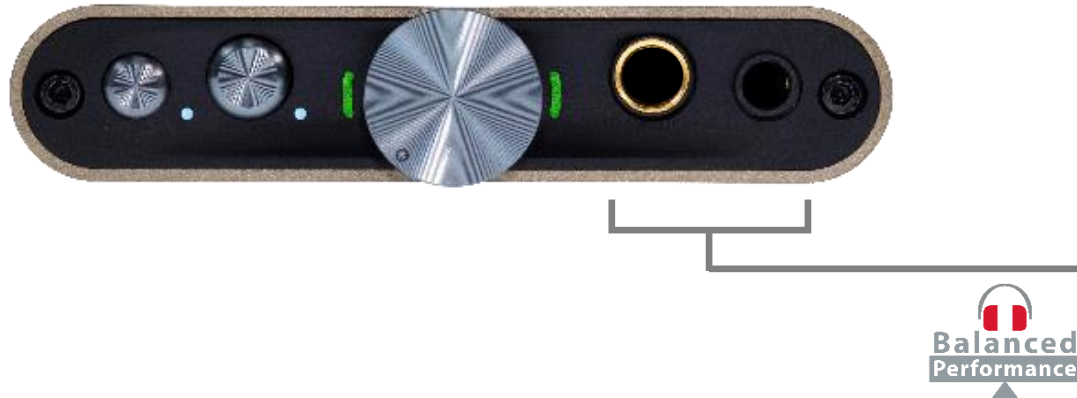
Use **iEMatch** for the most sensitive IEMs. It fine-tunes the output level, ensuring a perfect match with the hip-dac 3.

Explanation of Xbass as well as Output

The hip-dac 3 provides two outputs:

A **3.5mm** socket for single-ended headphones, it utilises iFi's **S-Balanced** circuitry, minimising crosstalk and distortion for single-ended connections.

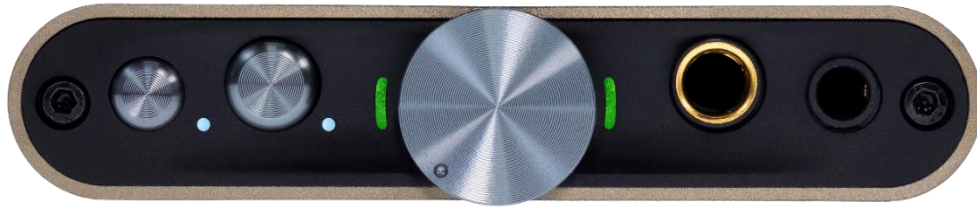
A **4.4mm balanced** output for those with balanced connectivity, leveraging the device's differential amp design.







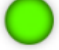


Many headphones lack the correct bass response. **XBass** is an analogue circuit designed to 'restore' the lost bass response, achieving a more accurate reproduction of the original music.



Status LEDs



Audio Format & kHz LED

-  Yellow PCM 44.1/48kHz
-  White PCM 88.2/96/176.4/192/352.8/384kHz
-  Cyan DSD 64/128
-  Red DSD 256
-  Green MQA
-  Blue MQA Studio
-  Magenta Original Sample Rate (MQB)



Battery status LED

-  76% - 100%
-  26% - 75%
-  11% - 25%
-  0% - 10%

Battery Life

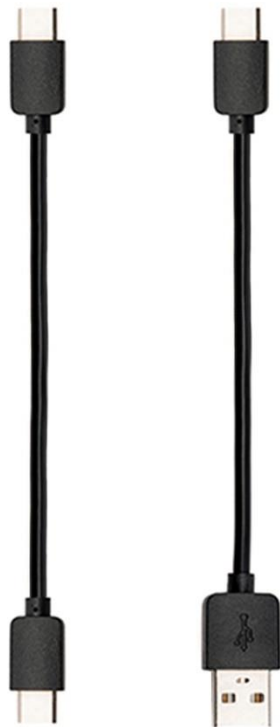


The 2200mAh battery offers up to 12 hours playing time.

Appendix



Box contents



Connections



S-BAL 3.5mm

BAL 4.4mm



USB-C Data



USB-C Charging (5V only)



Specifications

| SPECIFICATIONS | |
|--|---|
| Input | USB-C |
| Formats supported | DSD256, PCM 384kHz, MQA Decoder |
| DAC | Bit-Perfect DSD & DXD DAC by Burr Brown |
| Headphone Outputs | |
| Balanced | 4.4mm |
| S-BAL | 3.5mm |
| Power Output (RMS) | |
| Balanced | 400mW @ 32 Ω ; 6.3V @ 600 Ω |
| S-BAL | 280mW @ 32 Ω ; 3.2V @ 600 Ω |
| Output Impedance | |
| Balanced | $\leq 1\Omega$, With iEMatch engaged: $\leq 4.5\Omega$ |
| S-BAL | $\leq 1\Omega$, With iEMatch engaged: $\leq 4.5\Omega$ |
| SNR | |
| Balanced | <109dB(A) @ 0dBFS |
| S-BAL | <103dB(A) @ 0dBFS |
| DNR | |
| Balanced | <109dB(A) |
| S-BAL | <103dB(A) |
| THD + N | |
| Balanced | <0.006X% (360mW/2.0V @ 600 Ω) |
| S-BAL | <0.01% (100mW/1.27V @ 16 Ω) |
| Frequency Response | 20Hz - 45kHz (-3dB) |
| Power Consumption | <2W idle, 4W max |
| Battery | Lithium-polymer 2200mAh approx. 8 hours |
| Power System | Charging via USB-C, BC V1.2 compliant up to 1000mA charging current |
| Dimensions | 102 x 70 x 14 mm (4.0" x 2.8" x 0.6") |
| Net weight | 135 g (0.30 lbs) |
| Limited Warranty | 12 months* |
| *12 months typical or as permitted/required by local reseller laws | |
| **Specifications are subject to change without notice. | |

ifi
audio